

# JVC

# SERVICE MANUAL

## COLOR TELEVISION

### AV-27115<sub>/X(US & CA)</sub>

BASIC CHASSIS

### AV-27115<sub>/AX(US & CA)</sub>

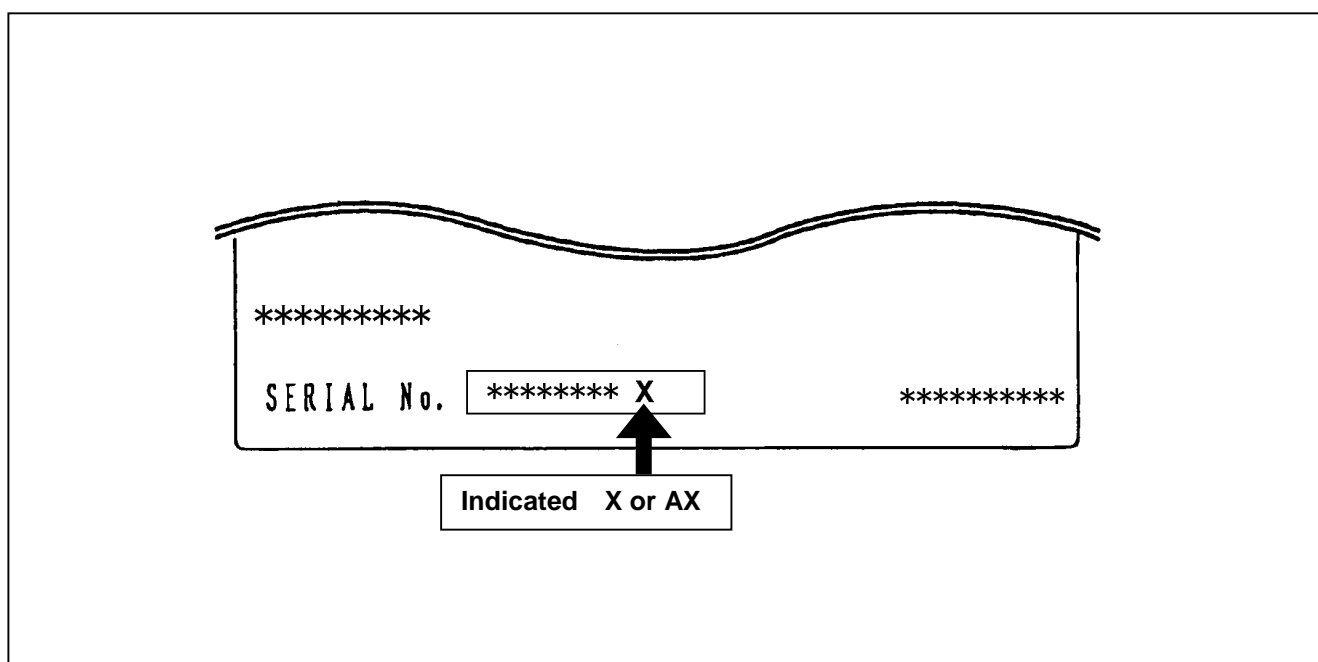
FV3

Supplementary

The following item for the AV-27115<sub>/X(US&CA)</sub>, AV-27115<sub>/AX(US&CA)</sub> model were changed from those of the AV-27115<sub>(US&CA)</sub>, AV-27115<sub>(A US&A CA)</sub> model. Therefore, this service manual describes only the items which differ from those of the AV-27115<sub>(US&CA)</sub>, AV-27115<sub>(A US&A CA)</sub> service manual. For details other than those described in this manual, please refer to the AV-27115<sub>(US&CA)</sub>, AV-27115<sub>(A US&A CA)</sub> service manual (No.51682, May, 2000).

## MODEL IDENTIFICATION

While referring to the illustration given below, identify model name on the rating label affixed to the rear cover.



## ■ DIFFERENCE PARTS LIST

### ● MAIN PWB PARTS LIST (Page42~45)

△	Ref. No.	Parts Number		Parts Name	Remarks
		AV-27115(US&CA) (No.51682)	AV-27115/X(US&CA) (No.51682C)		
		SFV-1032A-M2	SFV-1049A-M2	Main PWB	Not Interchangeable
	R1001	QRE121J-5R6Y	_____	C RESISTER	Delete
	R1005	QRG01GJ-121	_____	OM RESISTER	↑
	R1146	NRSA02J-273X	NRSA02J-562X	CHIP RESISTER	Not Interchangeable
	C1006	QETN1CM-476Z	QETN1EM-476Z	E CAP.	↑
	C1013	_____	NCB21HK-104X	CHIP C CAP.	Addition
	C1138	QETN1CM-476Z	QETN1EM-476Z	E CAP.	Not Interchangeable
	C1217	QETN1CM-476Z	QETN1EM-476Z	E CAP.	↑
	C1511	QETN1CM-476Z	QETN1EM-476Z	E CAP.	↑
	C1617	QETN1CM-476Z	QETN1EM-476Z	E CAP.	↑
	C1623	QETN1CM-476Z	QETN1EM-476Z	E CAP.	↑
	C1653	QETN1CM-476Z	QETN1EM-476Z	E CAP.	↑
	C1716	QETN1CM-476Z	QETN1EM-476Z	E CAP.	↑
	C1751	QETN1CM-476Z	QETN1EM-476Z	E CAP.	↑
	C1922	QEHB2CM-336	QEHQ2CM-336	E CAP.	↑
	L1001	QQL03BJ-150Z	_____	PEAKING COIL	Delete
	D1002	MTZJ5.1B-T2	_____	CHIP ZENER	↑
	IC1001	_____	AN7805F	I.C.	Addition
	IC1701	M37272MA-050SP	M37272MA-053SP	I.C.	Not Interchangeable
△	TU1001	QAU0069-001	QAU0199-001	TUNER	↑

### ● MAIN PWB PARTS LIST (Page46~49)

△	Ref. No.	Parts Number		Parts Name	Remarks
		AV-27115A(US&CA) (No.51682)	AV-27115/AX(US&CA) (No.51682C)		
		SFV-1034A-M2	SFV-1050A-M2	Main PWB	Not Interchangeable
	R1001	QRE121J-5R6Y	_____	C RESISTER	Delete
	R1005	QRG01GJ-121	_____	OM RESISTER	↑
	R1146	NRSA02J-273X	NRSA02J-562X	CHIP RESISTER	Not Interchangeable
	C1013	_____	NCB21HK-104X	CHIP C CAP.	Addition
	C1922	QEHB2CM-336	QEHQ2CM-336	E CAP.	Not Interchangeable
	L1001	QQL03BJ-150Z	_____	PEAKING COIL	Delete
	D1002	MTZJ5.1B-T2	_____	CHIP ZENER	↑
	IC1001	_____	AN7805F	I.C.	Addition
	IC1701	M37272MA-050SP	M37272MA-053SP	I.C.	Not Interchangeable
△	TU1001	QAU0069-001	QAU0199-001	TUNER	↑

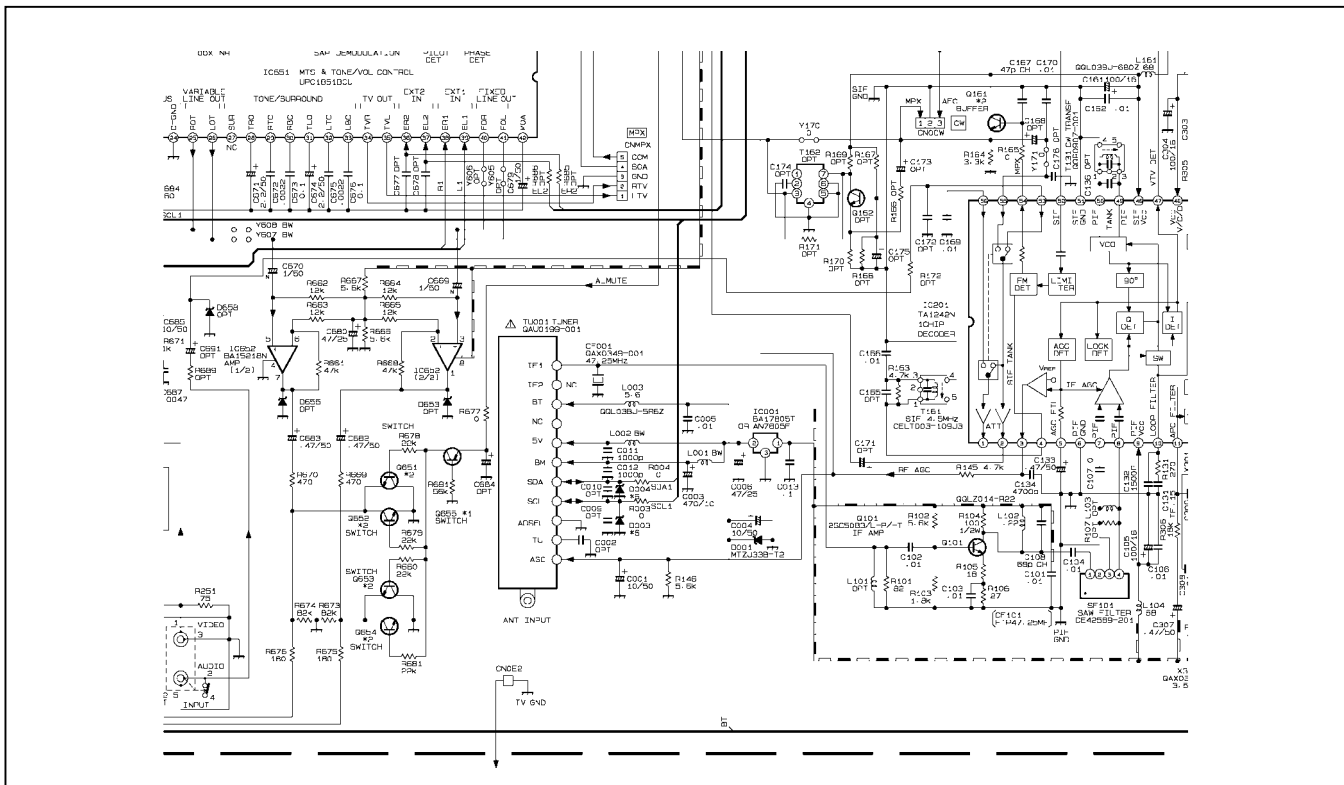
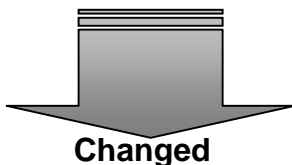
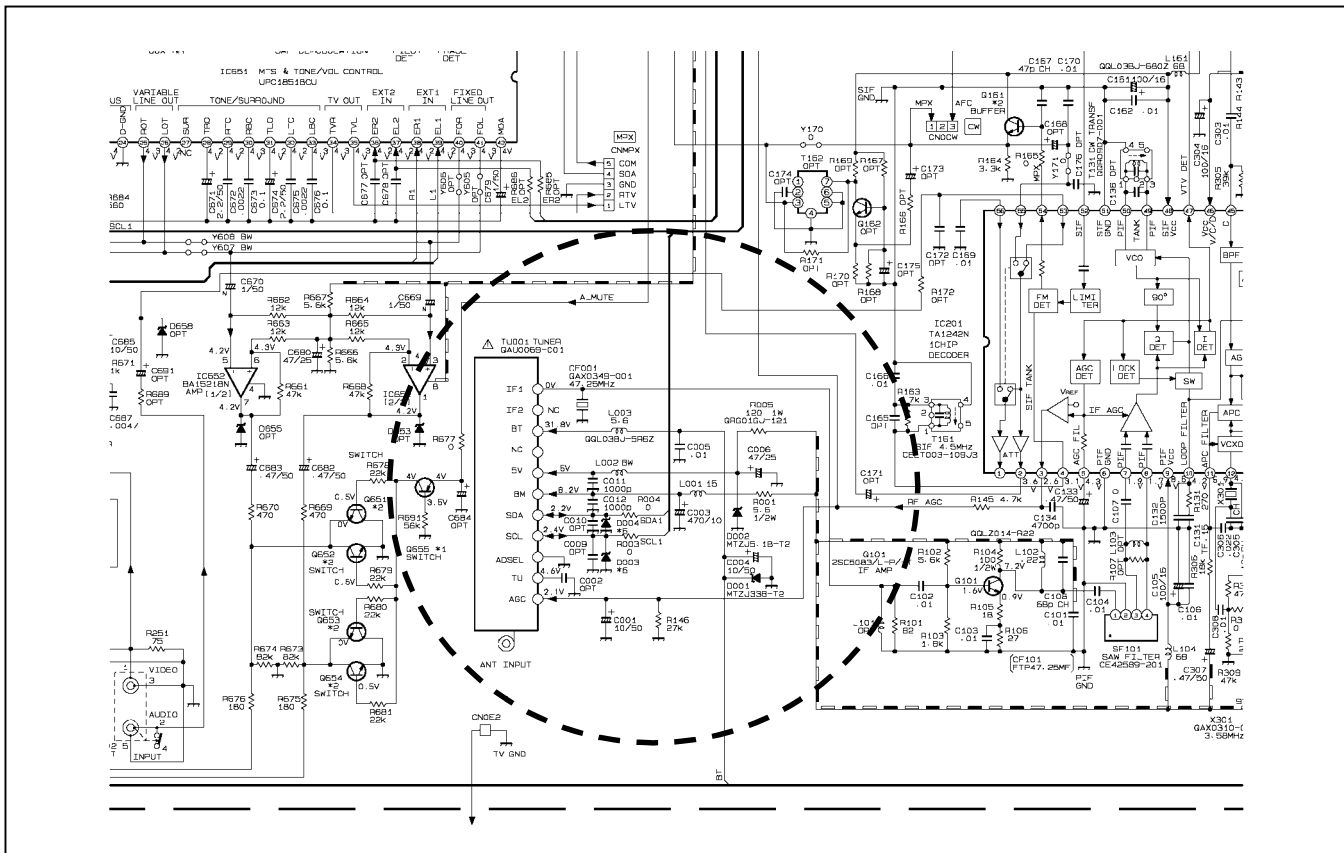
### ● PACKING (Page50)

△	Ref. No.	Parts Number		Parts Name	Remarks
		AV-27115(US&CA) (No.51682)	AV-27115/X(US&CA) (No.51682C)		
△	6	LCT0604-001A-A	LCT0604-001B-A	INST BOOK (US) [ENGLISH]	Not Interchangeable
△	6	LCT0606-001A-A	LCT0606-001B-A	INST BOOK (CA) [FRENCH]	↑

### ● PACKING (Page50)

△	Ref. No.	Parts Number		Parts Name	Remarks
		AV-27115A(US&CA) (No.51682)	AV-27115/AX(US&CA) (No.51682C)		
△	6	LCT0606-001A-A	LCT0606-001B-A	INST BOOK (CA) [FRENCH]	Not Interchangeable

### Changed around the Tuner(Page 2-9)



## **JVC SERVICE & ENGINEERING COMPANY OF AMERICA**

### **DIVISION OF JVC AMERICAS CORP.**

<b>Head office :</b>	1700 Valley Road, Wayne, New Jersey 07470	(973)315-5000
<b>East Coast :</b>	10 New Maple Avenue, Pine Brook, New Jersey 07058	(973)396-1000
<b>Midwest :</b>	705 Enterprise St. Aurora, Illinois 60504	(630)851-7855
<b>West Coast :</b>	5665 Corporate Avenue, Cypress, California 90630	(714)229-8011
<b>Southwest :</b>	10700 Hammerly, Suite 105, Houston, Texas 77043	(713)935-9331
<b>Hawaii :</b>	2969 Mapunapuna Place, Honolulu, Hawaii 96819	(808)833-5828
<b>Southeast :</b>	1500 Lakes Parkway, Lawrenceville, Georgia 30243	(770)339-2582

### **JVC CANADA INC.**

<b>Head office :</b>	21 Finchdene Square Scarborough, Ontario M1X 1A7	(416)293-1311
<b>Vancouver :</b>	13040 Worster Court Richmond B.C. V6V 2B3	(604)270-1311

# **JVC<sup>®</sup>**